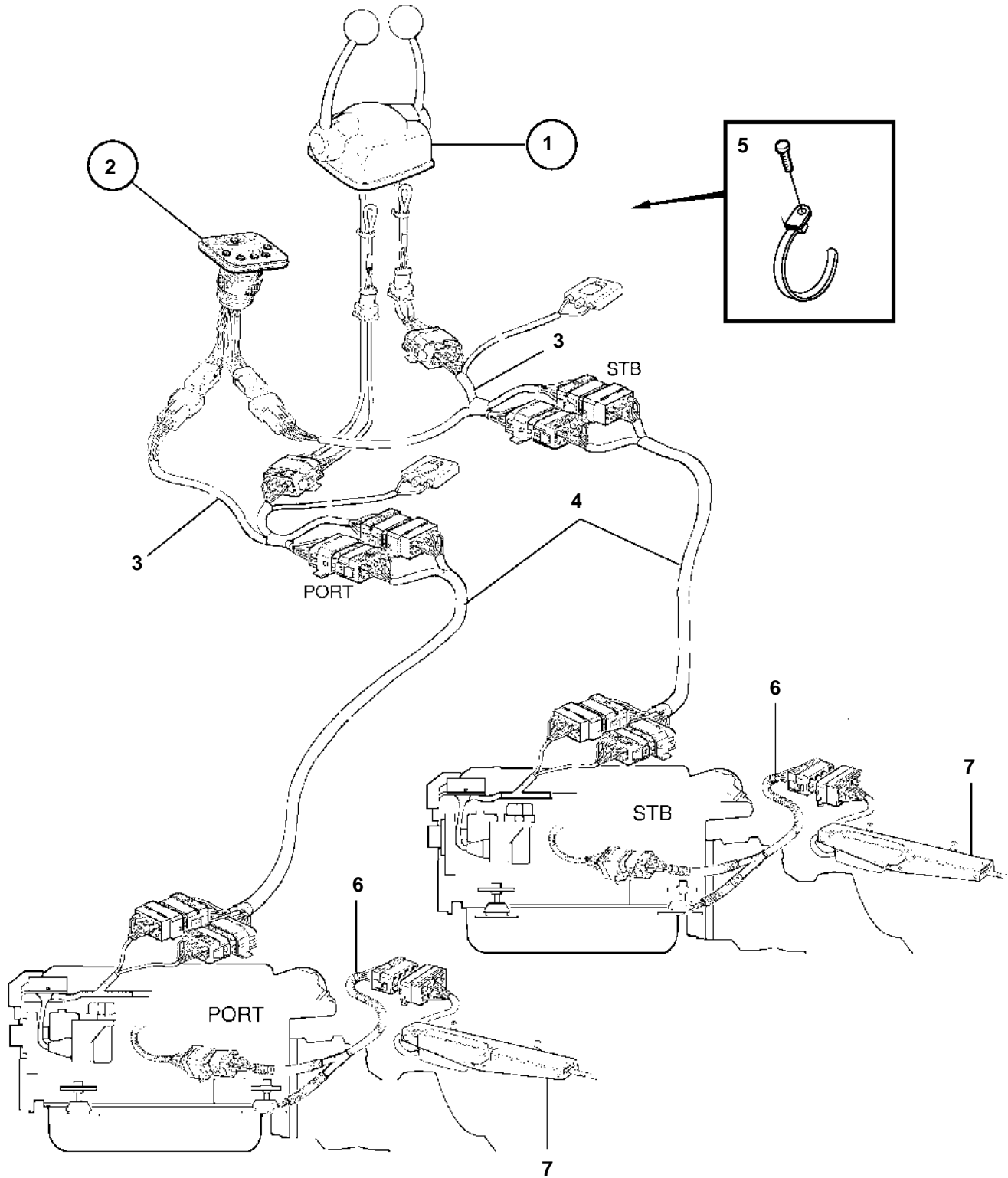


KAMD44P-B, KAD44P-B, KAMD44P-C, KAD44P-C KAMD300-A, KAD300-A



KAMD44P-B, KAD44P-B, KAMD44P-C, KAD44P-C KAMD300-A, KAD300-A

REF	PART NO.	QTY	DESCRIPTION	SEE SEC.	NOTES
1		1	Control		
				4995	
2		1	Control panel		
				4372	
3	874148	2	Cable kit		
4	873916	X	Extension cable		L=3,0m. 2x8-pole
	873917	X	Extension cable		L=5,0m. 2x8-pole
	873918	X	Extension cable		L=7,0m. 2x8-pole
	873919	X	Extension cable		L=9,0m. 2x8-pole
	873920	X	Extension cable		L=11,0m. 2x8-pole
5	949666	X	Strip clamp		
6		2	Cable kit	3455	FOR I/O
7		2	Actuator	3455	FOR I/O